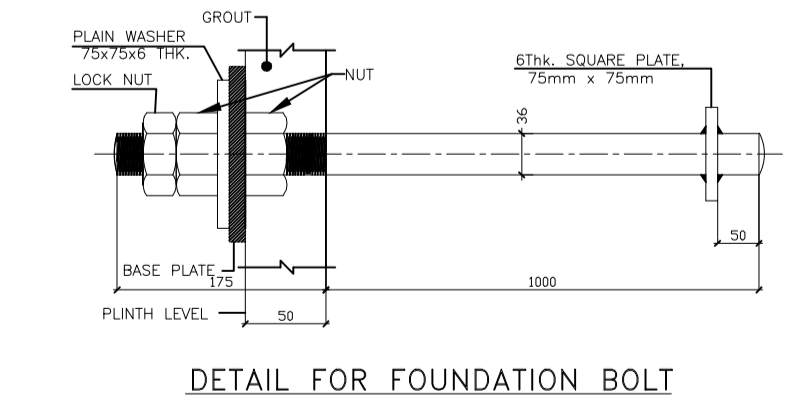


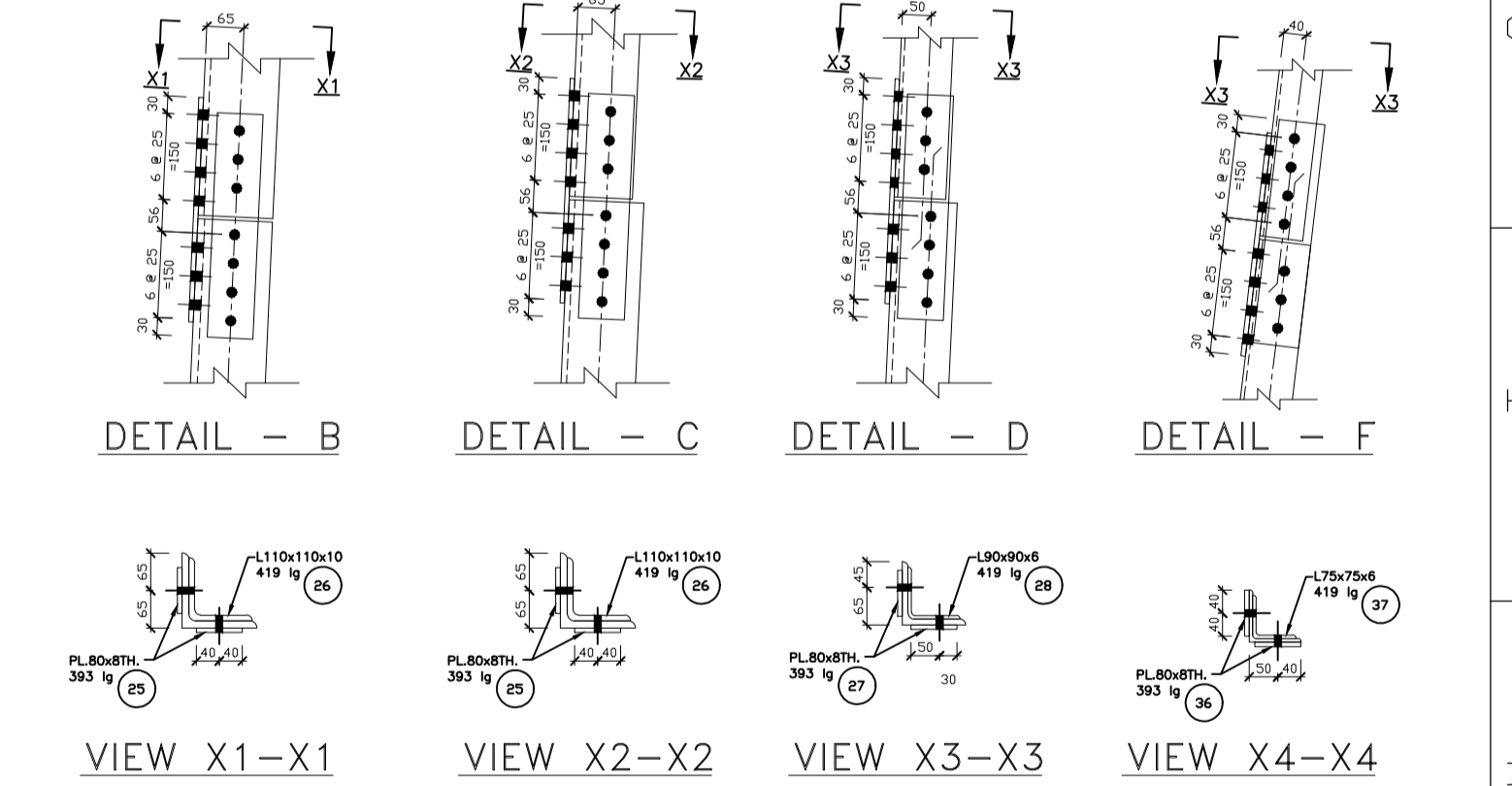
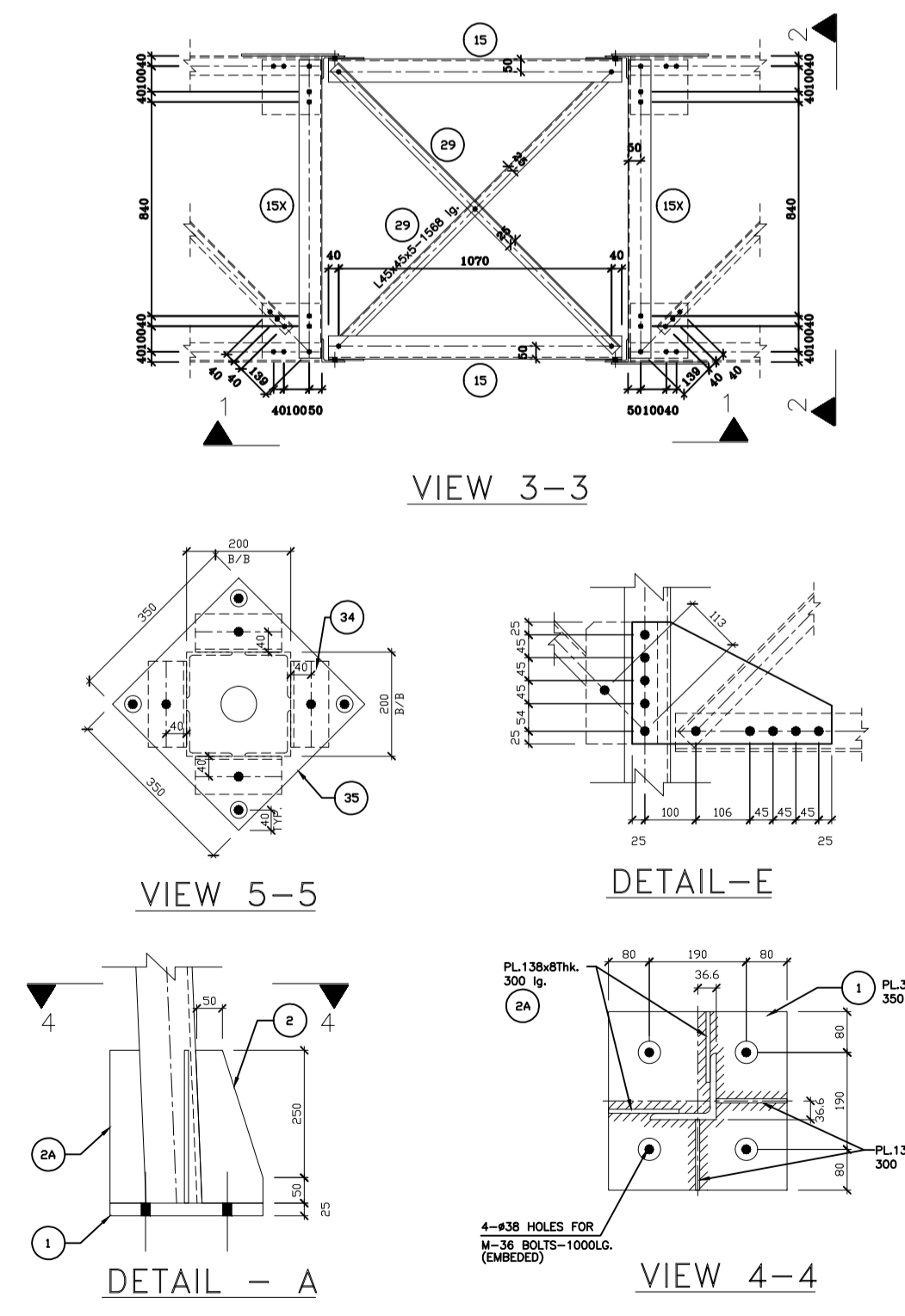
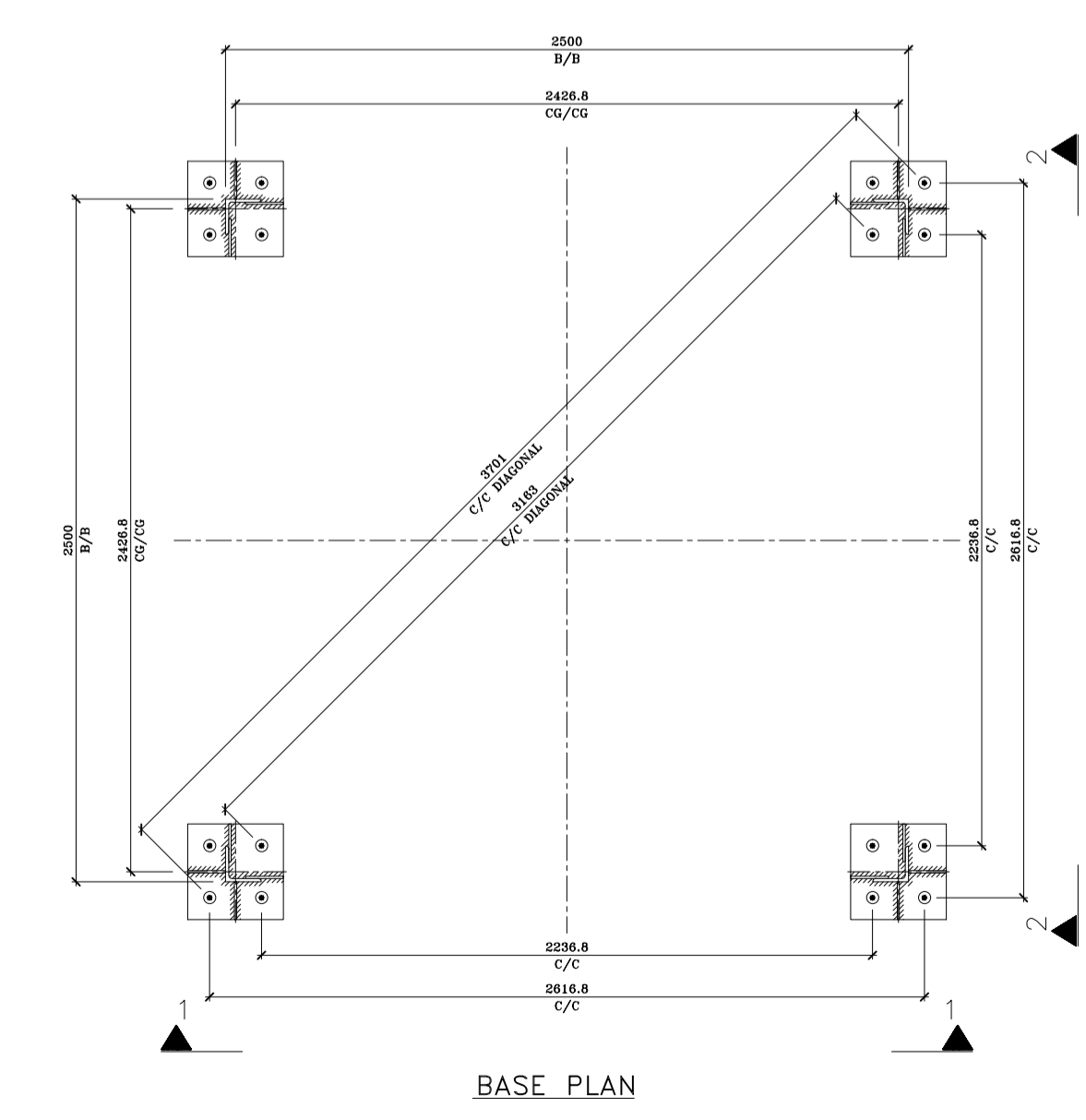
BILL OF MATERIALS							
SL. NO.	MKD. NO.	SECTION	LENGTH	NO. OF PCS. PER SET	UNIT WT. (Kg./M)	TOT. WT. (Kg.)	REMARKS
1	1	PL350x28	350	4	219.8	26.93	107.72
2	2	PL138x8	300	8	62.8	2.60	20.80
3	2A	PL138x8	300	8	62.8	2.60	20.80
4	3	L130x130x12	4672	2	23.4	109.32	218.64
5	3X	L130x130x12	4672	2	23.4	109.32	218.64
6	4	L130x130x10	5183	2	19.7	102.11	204.22
7	4X	L130x130x10	5183	2	19.7	102.11	204.22
8	5	L110x110x10	3455	2	16.5	57.01	114.02
9	5X	L110x110x10	3455	2	16.5	57.01	114.02
10	6	L90x90x6	3230	2	8.2	26.49	52.98
11	6X	L90x90x6	3230	2	8.2	26.49	52.98
12	7	L50x50x6	2900	8	4.5	13.05	104.40
13	8	L50x50x6	2775	8	4.5	12.49	99.92
14	9	L45x45x5	2655	4	3.4	9.03	36.12
15	10	L45x45x5	2538	4	3.4	8.63	34.52
16	11	L45x45x5	2427	4	3.4	8.25	33.00
17	12	L45x45x5	2322	4	3.4	7.89	31.56
18	13	L45x45x5	2223	4	3.4	7.56	30.24
19	14	L45x45x5	2140	4	3.4	7.28	29.12
20	15	L90x90x6	1150	4	8.2	9.43	37.72
21	15X	L90x90x6	1150	4	8.2	9.43	37.72
22	16	L45x45x5	1395	8	3.4	4.74	37.92
23	17	PL 391x6	239	8	47.1	4.40	35.20
24	18	PL 140x6	239	8	47.1	1.58	12.64
25	19	L50x50x6	2655	4	4.5	11.95	47.80
26	20	L50x50x6	2538	4	4.5	11.42	45.68
27	21	L50x50x6	2427	4	4.5	10.92	43.68
28	22	L50x50x6	2322	4	4.5	10.45	41.80
29	23	L50x50x6	2223	4	4.5	10.00	40.00
30	24	L50x50x6	2140	4	4.5	9.63	38.52
31	25	PL 80x8	393	16	62.8	1.97	31.52
32	26	L110x110x10	419	8	16.5	6.91	55.28
33	27	PL 80x8	393	8	62.8	1.97	15.76
34	28	L90x90x6	419	4	8.2	3.44	13.76
35	29	L45x45x5	1668	4	3.4	5.33	21.32
36	30	L75x75x6	3480	2	6.8	23.66	47.32
37	30X	L75x75x6	3480	2	6.8	23.66	47.32
38	31	L45x45x5	1713	4	3.4	5.82	23.28
39	32	L45x45x5	1560	4	3.4	5.30	21.20
40	33	L45x45x5	1360	4	3.4	4.62	18.48
41	34	L45x45x5	176	4	3.4	0.60	2.40
42	35	PL 350x10	350	1	78.5	9.62	9.62
43	36	PL 80x8	393	8	62.8	1.97	15.76
44	37	L75x75x6	419	4	6.8	2.85	11.40
					<b>Total</b>	<b>2481.02</b>	

WEIGHT OF FOUNDATION BOLTS & NUTS						
DESCRIPTION	WT. OF BOLT 1 No.	WT OF NUT 2 Nos.	WT OF LOCK NUT 3 No.	WT. OF ANCHOR PL. 3 No.	WT. OF WASHER 1 No.	QTY. TOTAL
36mm DIA 1175mm LONG FOUNDATION BOLT	8.9016825	0.328	0.248	0.265	1.743	16
<b>Total</b>						<b>183.8</b>

DESCRIPTION	UNIT WT(KG)	NOS.	TOTAL WT.(KG)
M - 16 X 40	0.125	152	19.0
M - 16 X 45	0.133	68	9.04
M - 16 X 50	0.141	26	3.67
M - 16 X 55	0.149	312	46.49
M - 16 X 60	0.157	2	0.31
M - 16 X 65	0.164	28	4.59
Step bolt (16 dia x 175 Lg)	0.400	51	20.4
<b>SPRING WASHER (3.5 MM THK.)</b>			
	0.009	588	5.292
<b>PACK WASHER:</b>			
5 THK.	0.054	118	6.372
6 THK.	0.065	35	2.275
<b>TOTAL</b>			
			<b>117.4</b>



- NOTES:-**
- ALL DIMENSION ARE IN MM.
  - ALL STEEL AS PER I.S. 2062(GRADE-A) & FABRICATION SHALL AS PER IS-802.
  - BOLTS, NUTS AS PER I.S. 6639 (PROPERTY CLASS 5.6)
  - GALVANISING SHALL BE 610 GM./MT. SQ.
  - ALL HOLES 17.5 MM DIA. FOR 16 MM. DIA. BOLTS IF NOT STATED OTHERWISE.
  - 3% EXTRA, NUTS & BOLTS SHALL BE SUPPLIED FOR ERECTION.
  - THE B.O.M. PROVIDED IS AN INDICATIVE ONE & WILL BE FINALIZED AT THE TIME OF PROTO.



PROJECT		CUSTOMER	
		JHARKHAND URJA SANCHARAN NIGAM LIMITED	
SUB-CONTRACTOR		CONTRACTOR'S CONSULTANT	
		 SATCON (CONSULTANTS AND ENGINEERS) <a href="http://www.satcon.in">www.satcon.in</a>	
DESIGN	T.S	TITLE	
DRAWN	N.K.D	STRUCTURAL G.A. DETAILS OF 220KV GANTRY TOWER MK'D S1P	
CHECKED	S.K.D		
APPROVED	S.M	DRG. NO.: TEL-JUSNL-JAIN-S-GAD-24A	
DATE	08.12.16	SCALE-1:25	SHEET NO.- 1 OF 1 SHEET SIZE- A1 REV. NO.- 0
SUBMITTED FOR APPROVAL	INFORMATION	REFERENCE	RECORD
CONSTRUCTION			